

SUMMARY

Print Audit Infinite Device Management (IDM) is designed to monitor network attached printer/scanner/copier devices using the Simple Network Management Protocol (SNMP). Under most circumstances, therefore, it can only be used to monitor printers, scanners and copiers that are:

1. Directly attached to the network – using either a cable or Wi-Fi
2. Provide support for SNMP

Because of these requirements, desktop printers, scanners and MFPs that are locally attached to a PC or server - using either a parallel or, more commonly, a USB cable - cannot normally be monitored by IDM.

Some locally attached HP printers and copiers, however, can be included, by installing the HP SNMP Proxy Agent on the host PC. With this free agent installed IDM can monitor both meters, such as the number of pages printed, and the status of consumables such as toner and printer ink. Smart alerts can also be configured to warn when consumables need to be replaced, just as with network-attached devices.

How it works

The HP SNMP Proxy Agent is installed on the PC to which the printer is connected and, when prompted, will retrieve status information via its parallel or USB connection. It can then relay that information back to the IDM Information Collection Engine (ICE) using the Windows SNMP service, also configured on the host PC.

As far as the ICE is concerned it is dealing with a network printer via SNMP so, in the majority of cases, no changes need to be made to support printers via the HP SNMP Proxy Agent.

Restrictions

The HP SNMP Proxy Agent is only certified to work with a specific set of HP printers (Appendix A). It may also work with other HP devices, indeed the example used in this document (a Photosmart B100 series MFP) isn't listed, but was picked up by the HP SNMP Proxy Agent. However, the only way to know for sure is to try it.

Printers, scanners and copiers from other vendors are unlikely to work with the HP SNMP Proxy Agent.



Obtaining the HP SNMP Proxy Agent software

Please note that the HP SNMP Proxy Agent is **NOT** supplied nor supported by Print Audit.

The HP SNMP Proxy Agent is available as part of an application called HP Web JetAdmin which can be used to manage HP and non-HP printers using the SNMP protocol on a corporate network. You can get both the full Web Jetadmin application and the proxy agent software from the following link:

www.hp.com/go/webjetadmin

You do **NOT** need the Web Jetadmin software itself in order to use the HP SNMP Proxy Agent. Moreover, when you download the software you will find that HP provides two proxy agents:-

1. HP SNMP Proxy Agent
2. HP WS Pro Proxy Agent

IDM can only collect information using the first of these – the HP SNMP Proxy Agent – there is therefore no need to install the HP WS Pro Proxy Agent unless you specifically require it for use with HP Web Jetadmin. The HP readme documentation advises installing both, but for IDM this is **NOT** necessary.

Other things to note:

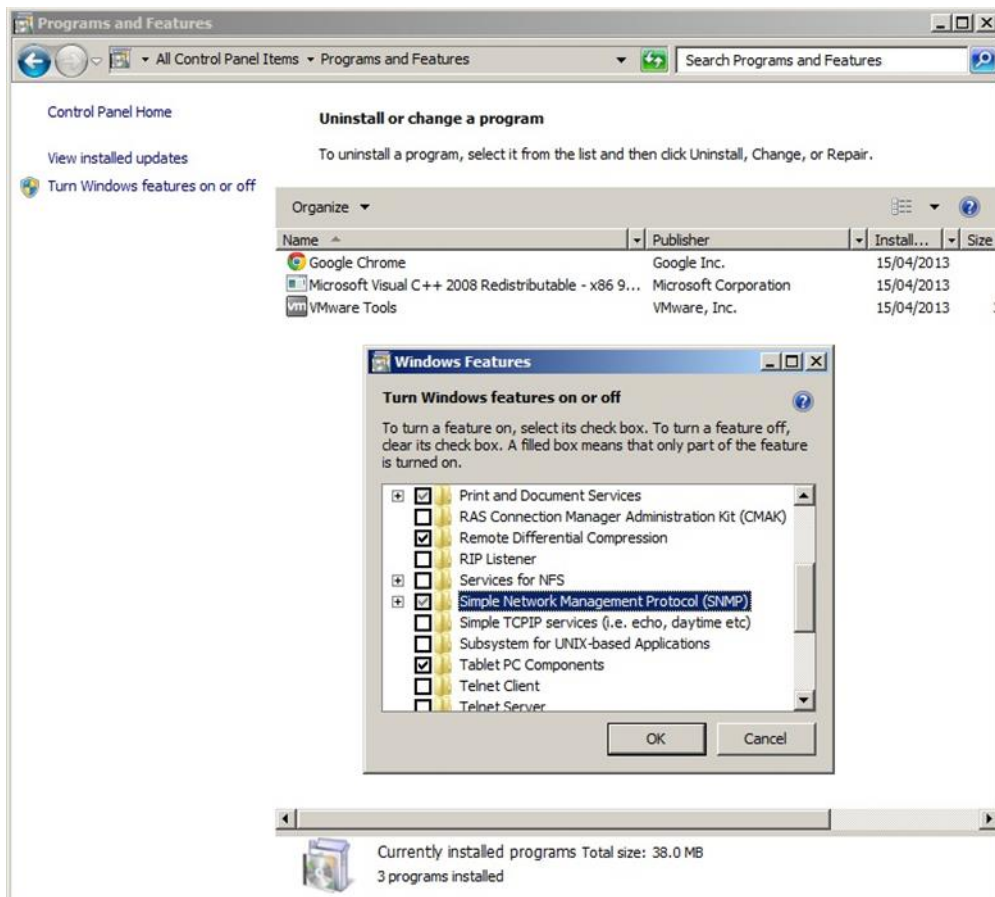
- There is no charge for the software but you will have to register with HP in order to download it.
- The HP SNMP Proxy Agent is available for both 32-bit and 64-bit implementations of Windows and on workstations can be installed on Windows XP or later (not Home editions) and on servers running Windows Server 2003 or above.
- The HP SNMP Proxy Agent can handle multiple printers attached to the same host.

Pre-requisites – Windows SNMP

Before you install the HP SNMP Proxy Agent you must first make sure that Microsoft Windows SNMP service has been configured and started on the PC to which the printer is connected. This service is usually installed as part of Windows but not set to run by default so you will always need to check.

The procedure is similar on all versions of Windows. Here's how it's done in Windows 7:-

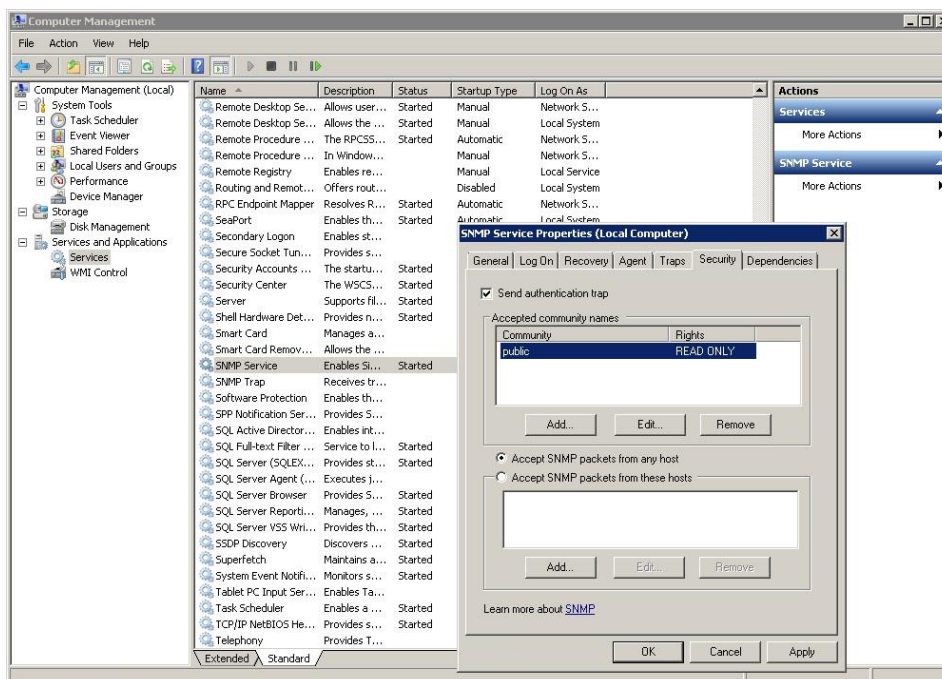
1. Open the Windows Control Panel and select Programs and features.
2. In the left side panel choose the option marked Turn Windows features on or off.



3. When the Windows features window opens scroll down the list and click on the box marked Simple Network Management Protocol (SNMP) as in the screenshot above.
4. Click the OK button and the SNMP service should be set to start automatically for you.

Once the SNMP Service is started you will also need to make a couple of changes to the way the SNMP service is configured, as below:

1. From the Start button menu right-click on **Computer** and select **Manage** to open the **Computer Management** window.
2. In the left-hand pane select **Services**.
3. Scroll down the list of services displayed and double-click on **SNMP Service** to edit its properties (ignore the SNMP Trap service).

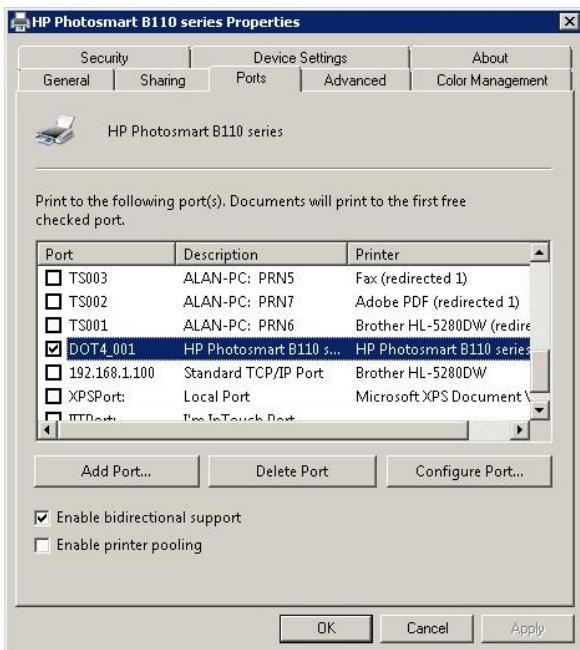


4. Click on the **Security** tab and add an “Accepted community name”. The name to add should be **public** with **READ ONLY** rights.
5. You will also need to tell the SNMP service to accept SNMP packets from the ICE when it is scanning for printers. The easiest way of doing this is to click and select the option marked **Accept SNMP packets from any host**, but if preferred you can specify the host name or IP address of the computer hosting the ICE.

Pre-requisites - Printer driver

In order for the HP SNMP Proxy Agent to discover locally connected devices, a supported printer driver is needed to enable communication between the device and client machine.

For most devices you should use a driver that provides an HP DOT4 port connection - whether the connection is via USB or LPT. You can see what ports a Windows driver has available to it from its properties, an example of the correct port type is DOT4_001 as in the screenshot below:-



If the port type is different (e.g. LPT1 or USB001), then you should investigate whether this can be fixed by re-running the printer setup program.

Another alternative is to install the HP Universal Print Driver (version 4.7 or greater is required). Note, however, that before changing any printer driver you should discuss the impact with the user of the computer as the print options may be altered as a result.



Installing the HP SNMP Proxy Agent software

Once you have made sure that the pre-requisites above have been satisfied you can install the HP SNMP Proxy Agent.

First download the software by going to www.hp.com/go/webjetadmin, click **Download Now**, and follow the instructions.

The download will come in the form of an executable archive - simply run the download to un-zip the files.

Tip – The default location for un-zipping will be a hidden directory, so when asked specify your own target folder instead.

Things to note:

- You install the HP SNMP Proxy agent on the PC to which the printer/s are attached.
- You can install the HP SNMP Proxy Agent before or after installing any printer drivers.
- You can install the HP SNMP Proxy Agent on the same PC as the IDM ICE, but this isn't a requirement.
- You will require admin rights to install the HP SNMP Proxy Agent on the host PC but the process requires very little intervention and takes just a few seconds.
- A re-boot is not usually required.

There are separate installers for 32-bit and 64-bit Windows platforms, in the version (10.3) used for this guide the download contained the following files:

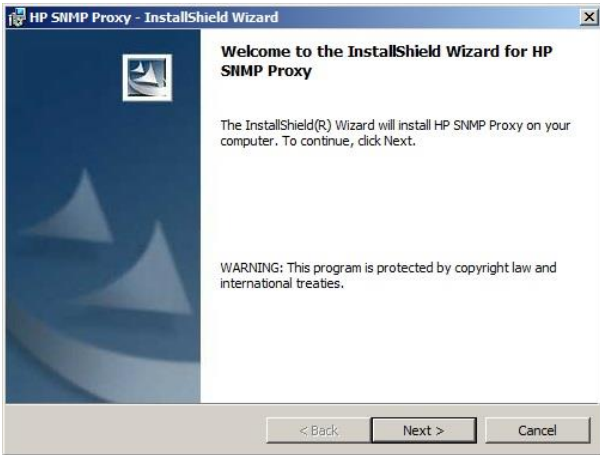
HP SNMP Proxy_32_10_3_0010.msi

HP SNMP Proxy_64_10_3_0010.msi

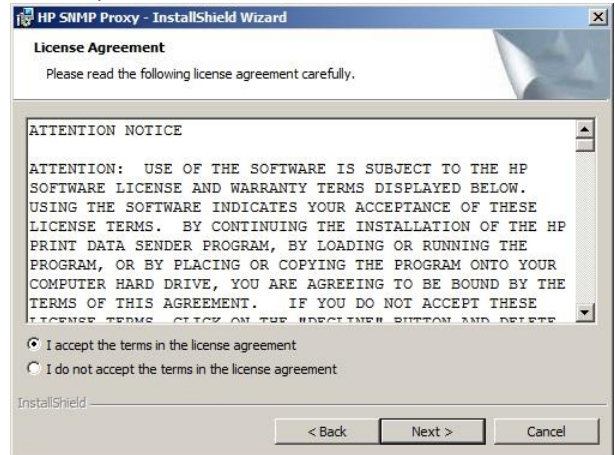
HPWSProxyService_10_3_1.msi ***this is NOT required**

The installers are all .msi files for use with the integrated Windows Installer (Msiexec) which means they can be run simply by double-clicking the relevant .msi file. The Windows Installer will then start automatically and prompt you for information using dialog boxes, as below:-

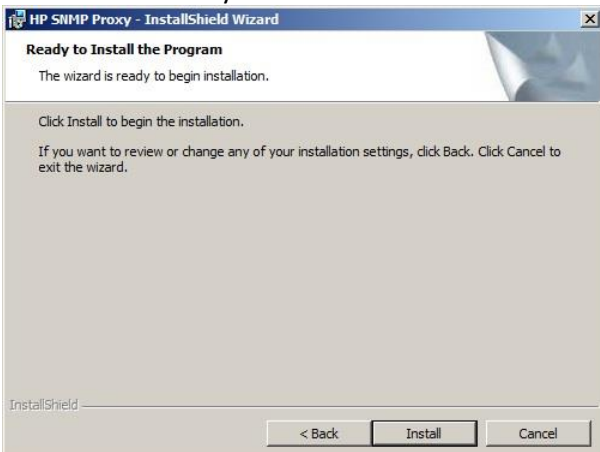
1. Start the installer.



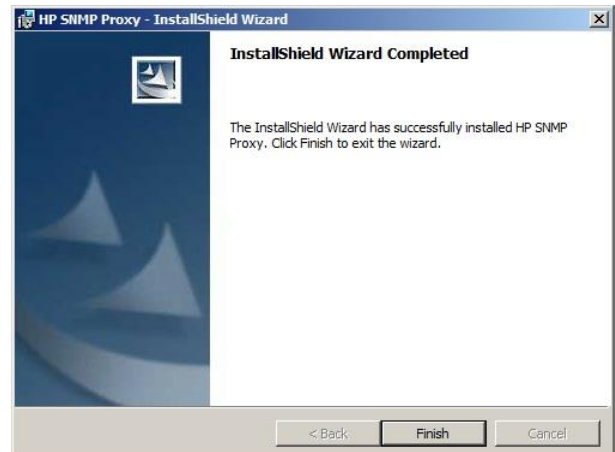
2. Accept the license terms.



3. Click when ready.



4. Let the installer do its work.



Alternatively you can perform a silent install without any prompts and, with the right tools also push the agent out over the network. Information on how to perform these installs is available in the HP SNMP Proxy Agent readme file available [from this download link](#).

The readme file also explains the installation in more detail and contains useful troubleshooting tips for when it fails to work as expected.

Handling the HP SNMP Proxy Agent in IDM

On most networks no changes will need to be made to IDM or the Information Collection Engine (ICE) to monitor local printers via the HP SNMP Proxy Agent.

The only requirement is to make sure that the IP address of the PC running the Proxy Agent is included in the range scanned by the ICE.

From the IDM portal:-

1. Click on the **Administration** tab and select **Customers**
2. Find the customer and click on the site required
3. Click the **Information Collection Engine** tab
4. Scroll down to **Scan Settings**

Scan Settings

Discovery Scan: (minutes)

Quick Scan: (minutes)

Scan Range: Default Scan Range
 Custom Scan Range(s)

Custom Scan Range(s)

Scan From	Scan To	Subnet Mask	
192.168.1.50	192.168.1.255	255.255.255.0	<input type="button" value="Delete"/>

If the ICE is configured to use the **Default Scan Range**, no changes are normally required.

If the ICE is configured for **Custom Scan Range(s)**, you need to make sure the address of the host PC is included in one of the custom ranges specified.

What IDM will display

Printers discovered via the HP Proxy Agent will be displayed and handled exactly the same way as others that are directly attached to the network. As in the screenshot below which shows a USB attached HP Photosmart B110 MFP (note that the comment field has been completed manually).

Device Details
Save

Device Name:

Model: Report Missing Model

Manufacturer:

Location:

Serial Number:

Asset Number:

IP Address: Edit

MAC Address:

Device Display:

Purchase Date: 📅


Firmware Version:

Custom Field #1:

Custom Field #2:

Comments:

Device Model
UNKNOWN Color Device



First Scan Date: Tuesday, December 31, 2013 1:07 PM (GMT Standard Time)

Last Scan Date: Thursday, January 02, 2014 2:54 PM (GMT Standard Time)

Meters
Supplies
Costs
History
Smart Alerts
Service Alerts

Type	Information	Level	Projected Depletion Date	Projected Impressions Remaining	Coverage
Black Toner	black ink	<div style="width: 30%; background-color: black; height: 10px;"></div> 30%			
Cyan Toner	cyan ink	<div style="width: 69%; background-color: cyan; height: 10px;"></div> 69%			
Magenta Toner	magenta ink	<div style="width: 67%; background-color: magenta; height: 10px;"></div> 67%			
Yellow Toner	yellow ink	<div style="width: 59%; background-color: yellow; height: 10px;"></div> 59%			
Paper		? Unknown			

Note: Manual toner ordering has not been configured for this device. Please see the Help for more information.

The IP and MAC addresses are for the host PC to which the printer is attached.

On some MFP products and where multiple printer drivers are installed, multiple instances of a device may be discovered by IDM. You can work around this issue by choosing just one of the instances to manage from the IDM dashboard.

Appendix A. Devices supported by the HP SNMP Proxy Agent

HP Colour LaserJet 2550 series	HP LaserJet 1160 series	HP LaserJet P2055/P2035	HP Photosmart C3100 series
HP Colour LaserJet 2605	HP LaserJet 1300	HP LaserJet P3004 series	HP Photosmart C4100 series
HP Colour LaserJet 2700	HP LaserJet 1300n	HP LaserJet P3005 series	HP Photosmart C4200
HP Colour LaserJet 2700n	HP LaserJet 1312 MFP	HP LaserJet P4014/15	HP Photosmart C4500 series
HP Colour LaserJet 2820 series	HP LaserJet 1320 series	HP LaserJet M1522 nf	HP Photosmart C5100 series
HP Colour LaserJet 2830 series	HP LaserJet 2200	HP Officejet 4100	HP Photosmart C6100 series
HP Colour LaserJet 2840 series	HP LaserJet 2300	HP Officejet 4105	HP Photosmart C6300 series
HP Colour LaserJet 3000	HP LaserJet 2300L	HP Officejet 4200 series	HP Photosmart C7100 series
HP Colour LaserJet 3500	HP LaserJet 2410	HP Officejet 4300 series	HP Photosmart D5060
HP Colour LaserJet 3550	HP LaserJet 2420	HP Officejet 5500 series	HP Photosmart D5100 series
HP Colour LaserJet 3600	HP LaserJet 2430	HP Officejet 5600 series	HP Photosmart D6100 series
HP Colour LaserJet 3700	HP LaserJet 3015	HP Officejet 5700	HP Photosmart D7100 series
HP Colour LaserJet 3800	HP LaserJet 3020	HP Officejet 6100	HP Photosmart D7200 series
HP Colour LaserJet 4600	HP LaserJet 3027	HP Officejet 6200 series	HP Photosmart D7300 series
HP Colour LaserJet 4610	HP LaserJet 3030	HP Officejet 6300 series	HP Photosmart Pro B9100 series
HP Colour LaserJet 4650	HP LaserJet 3050	HP Officejet 7200 series	HP PSC 1000
HP Colour LaserJet 4700	HP LaserJet 3050z	HP Officejet 7300 series	HP PSC 1100
HP Colour LaserJet 4730 MFP	HP LaserJet 3052	HP Officejet 7400 series	HP PSC 1200
HP Colour LaserJet 5550	HP LaserJet 3055	HP Officejet 7580	HP PSC 1200
HP Colour LaserJet 9500 MFP	HP LaserJet 3380	HP Officejet 7680/7780	HP PSC 1300 series
HP Colour LaserJet CM 1512nfi	HP LaserJet 3390	HP Officejet 9100 series	HP PSC 1310 series
HP Colour LaserJet CM1312	HP LaserJet 3500	HP Officejet J2100 series	HP PSC 1358
HP Colour LaserJet CM2320	HP LaserJet 4200	HP Officejet Pro K5300	HP PSC 1400 series
HP Colour LaserJet CM 4540 MFP	HP LaserJet 4240	HP Officejet Pro K5400 series	HP PSC 1500 series
HP Colour LaserJet CM 6040 MFP	HP LaserJet 4250	HP Officejet Pro K5600	HP PSC 1600 series
HP Colour LaserJet CP 1505	HP LaserJet 4300	HP Officejet Pro K8600	HP PSC 2100
HP Colour LaserJet CP1515/18	HP LaserJet 4350	HP Officejet Pro L7300	HP PSC 2150
HP Colour LaserJet CP202x	HP LaserJet 500 Colour MFP M575	HP Officejet Pro L7500	HP PSC 2170
HP Colour LaserJet CP2025	HP LaserJet 500 Colour M551	HP Officejet Pro L7600	HP PSC 2200
HP Colour LaserJet CP3505	HP LaserJet 500 MFP M525	HP Officejet Pro L7700	HP PSC 2300 series
HP Colour LaserJet CP3515	HP LaserJet 5200	HP Officejet Pro L7700	HP PSC 2350 series
HP Colour LaserJet CP3525	HP LaserJet 5200lx	HP Photosmart 140 series	HP PSC 2400 series
HP Colour LaserJet CP4005	HP LaserJet 600 M601	HP Photosmart 240 series	HP PSC 2400 series
HP Colour LaserJet CP5520	HP LaserJet 600 M602	HP Photosmart 2570 series	HP PSC 2500 series
HP Colour LaserJet CP6005	HP LaserJet 600 M603	HP Photosmart 2600 series	HP Scanjet 7000n
HP Colour LaserJet CP9505	HP LaserJet 700 MFP M725	HP Photosmart 2700 series	HP Scanjet 8500
HP Deskjet 450	HP LaserJet 8150	HP Photosmart 2700 series	HP Scanjet 9120
HP Deskjet 5400 series	HP LaserJet 9000	HP Photosmart 3100 series	
HP Deskjet 5900 series	HP LaserJet 9040 MFP	HP Photosmart 3200 series	
HP Deskjet 6600 series	HP LaserJet 9050	HP Photosmart 330 series	
HP Deskjet 6800 series	HP LaserJet 9050mfp	HP Photosmart 3300 series	
HP Deskjet 6980	HP LaserJet 9500	HP Photosmart 380 series	
HP Deskjet 9800	HP LaserJet CM1410 Series	HP Photosmart 420 series	
HP Deskjet D1600	HP LaserJet CP1520 Series	HP Photosmart 440	
HP Deskjet D2600	HP LaserJet M1530 Series	HP Photosmart 470 series	
HP Deskjet F300 series	HP LaserJet M2727 MFP	HP Photosmart 470 series	
HP Deskjet F4100	HP LaserJet M3027 MFP	HP Photosmart 7200 series	
HP Deskjet F4180	HP LaserJet M3035 MFP	HP Photosmart 7600 series	
HP Deskjet F4400	HP LaserJet M4345 MFP	HP Photosmart 7700 series	
HP LaserJet 1010	HP LaserJet M4555 MFP	HP Photosmart 7700 series	
HP LaserJet 1012	HP LaserJet M5025	HP Photosmart 7800 series	
HP LaserJet 1015	HP LaserJet M5035 MFP	HP Photosmart 7900 series	
HP LaserJet 1150	HP LaserJet M9040/50 MFP	HP Photosmart 8000 series	
	HP LaserJet P2015	HP Photosmart 8200 series	
	HP LaserJet P2015d	HP Photosmart 8700	
		HP Photosmart A310	
		HP Photosmart A430 series	
		HP Photosmart A510 series	
		HP Photosmart A610 series	
		HP Photosmart A710 series	

NB. This list is from the HP SNMP Proxy Agent readme document. Other devices may be supported but this is not guaranteed.